



Price Lists Using Data Extraction

Price List Data-Extraction

Overview

Price Lists can be created and manipulated in many different ways. Some of the common methods are:

1. Standard AS/400-based price list printouts
2. Price List data files, that can be manipulated by third-party tools
3. Price Lists as Excel spreadsheets
4. Price Lists in several Dancik-designed Word document formats
5. Price Lists as HTML drilldown applications that can be e-mailed

All of these options are available with the Price Lists by Price Class program on the Price Lists menu. Although the standard AS/400-based price lists are summarized by price class (and therefore do not include item-level details), all of the data-extraction options (options 2-5 above) can include item-level details (each item number) as well as summarized data by price class.

The term *data-extraction* is used generically to cover all of the options in which pricing data is manipulated as opposed to simply printed. The extracted price list data can be manipulated in many different ways, some of which are described in this section as part of the Dancik-supplied software. The extracted price list data can be transferred to folders, personal computers, and imported into various third-party programs including Microsoft Access and Excel.

Best Practices

The following is information about how to best use this new feature.

Data-Extraction Files

- Good housekeeping is important. If you plan to use this feature extensively, be sure to delete any files you are no longer using. These files waste system space, and can eventually slow down performance. If, for example, you generate a data-extraction file to create a quick IFS report, delete the file after the IFS report is complete.
- If you just want to generate Dancik-supplied IFS reports, don't worry about multiple pricing buckets. This feature applies to people using the Spreadsheet feature. Keep it simple, one file per Price List report in bucket 1.
- File and bucket descriptions are key. You can't get much detail in the provided eight-digit file name. So, use the File Description and Bucket Description to provide full descriptions. This helps avoid confusion as to what is in a file or bucket.
- Avoid loading your data-extraction files with unnecessary items. Use the selection criteria on the Price List by Price Class option to narrow your reports. No point in generating a 100-page report for the 50 pages of items your customer really wants.

Generating HTML Price List Drilldowns

- When generating a data-extraction file for this feature, you don't need to use multiple pricing buckets. We suggest just using bucket 1 (Price List bucket 1 or Customer bucket 1) for every report you generate. This helps you remember which bucket you used and keeps down the size of the data-extraction file.
- Keep the file size, or number of records in the file, small—no more than 1000 records. Too many records make the drilldown file large and difficult to e-mail. Also, all data is loaded dynamically via JavaScript. Some browser will “time out” if JavaScript runs too long.

Generating Detail or Summary Price List IFS Reports.

When generating your data-extraction file, you don't need to use multiple pricing buckets. We suggest using bucket 1 (Price List bucket 1 or Customer bucket 1) for every report you generate. This helps you remember which bucket you used and keeps down the size of the data-extraction file.

Generating Spreadsheets

When generating your data-extraction file for this feature, you might want to use multiple pricing buckets for external data manipulation. You'll need to remember which buckets you used when appending a record to an existing data-extraction file.

If you're going to use multiple buckets, we suggest selecting the same manufacturers for each bucket. For example, if you choose Mfgr REX for bucket 1, then choose Mfgr REX, for bucket 2. If you select different manufacturers, your data-extraction file will become extremely large and contain obsolete pricing bucket comparisons. Remember, this feature is primarily for people who want to extract data and generate their own reports and analysis.

Price List Data-Extraction

This option is also available from the Dancik Menu System, on menu RPL (Figure 2).

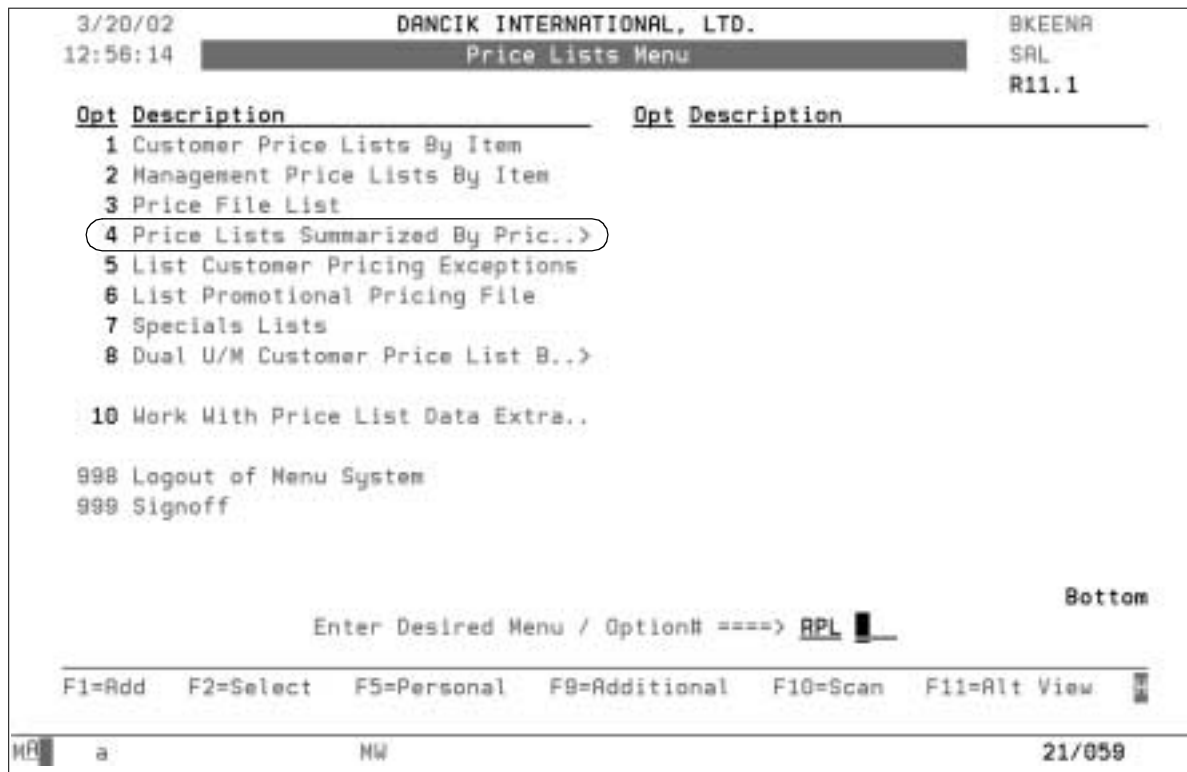


Figure 2: Price Lists Menu on RPL menu

After you enter option 4 on one of the screens shown in Figure 1 or Figure 2, a screen appears with three options (Figure 3). *Important: The data-extraction option is only valid for options 1 and 2.*

```
AS/ADD USER OPTIONS

--- PRINT PRICE LISTS SUMMARIZED BY PRICE CLASS ---

Enter "1" to Print For Specific Customer Account#.
Enter "2" to Print For A Price List#.
Enter "3" to Print For Groups Of Customers, By Parameter Selection.

Enter one of the choices listed above: █

F4=Cancel

HR a HW 15/044
```

Figure 3: Print Price List print options

Note: When you enter option 1 on the above screen, you are prompted to enter the account numbers for the accounts for which you want to run the price list. When you enter option 2, you are prompted to enter a specific price list number such as LP, A1, or A2.

7. Versions 1 and 4 prompt the Data Extraction field to appear on the Price List Print Options - 1 screen (Figure 5) .



Figure 4: Version Selection Screen

- After this screen, proceed through the next few screens and options, until you come to the Price List Print Options screen. Here you will find the option, **Extract results to data-file for later use** (Figure 5).

```
PRICE LIST PRINT OPTIONS - 1                                     PRICE LISTS
-----
Enter "1" to Print Sub-Headings for each Manufacturer, or
Enter "2" to Print Sub-Headings for each Product Line, or
Enter "3" to NOT Print Sub-Headings ..... 1
Enter a 1-Digit Company# (for report headings), or
Enter "P" if you are using a pre-printed form and you
do not want the program to print headings ..... (0-9 or P) 0

Enter "1" to Print Customer Address for Standard Window Envelope, or
Enter "2" to NOT Print Customer Address ..... 2

Enter "1" to Print Price Class Codes on the Price List, or
Enter "2" to NOT Print Price Class Codes (Only Print Descr) ... 1

Enter "Y" to Print Price Class Comments, or "N" to Suppress ... Y (Y/N)
Price Rolled Goods in U/M: _ Price Other Goods in U/M .....: _

Automatically distribute via Output Distribution System .....: N (Y/N)
Extract results to data-file for later use .....: N (Y/N)

-----
F4=Cancel.                F7=Continue.                F11=Previous Screen.
HEB a                      MW                                05/066
```

Figure 5: Price List Print Options - 1 screen

- Enter **Y** to extract the details to a user-defined data-extraction file while your report is being generated. The screen shown in Figure 6 appears, which includes parameters pertaining to the data-extraction.

PRICE LIST PRINT OPTIONS DATA-FILE EXTRACTION OPTIONS	PRICE LISTS For Price List Selections
File Name (Files will reside in library DOD@DTAEXT)	█
Clear file prior to loading	- (Y/N)
File Description	_____
(File Description is only required if the file is new or being cleared.)	
Select Bucket# to Load Prices	1 (1,2,3,4,5,6)
Bucket Description	_____
(Bucket Description is required)	
Enter Warehouse, or leave blank to access Stock vs Non-Stock at Item Level	__ (?)
F4=Cancel. F7=Continue. F11=Previous Screen.	
HR a	NW 05/065

Figure 6: Price List Print Options - 1 screen

Table 10-1 describes the fields on the Print Options screen.

Field	Description
File name	Enter the name to assign to the data-extraction file that is created from the information on the price list. <i>Note: All data-extraction files will be generated into library DOD@DTAEXT.</i>
Clear file Prior to loading	Enter Y in this field if you want to re-use and clear out all of the data for the select file mentioned above. If the file exists, it will be cleared, and then loaded with the new data from this price list. Enter N in this field if you want to add the new price list data to an existing file. This is applicable if you will be loading multiple “pricing buckets,” such as a single file that contains two sets of prices. For example, you can combine price list LP with price list BL to create a document for builders that shows their price beside the suggested list price that they might charge their customers. See the Select Bucket# field below.
File Description	This field is required only if the file is new or being cleared. Otherwise, the existing file description will remain.

Table 10-1: Fields in the Price List Print Options Screen

Select Bucket# to Load Price into for Price List selection	<p>When generating the data-extraction file by Price List (step 8.), you are given up to six buckets to place the prices into.</p> <p>The Default value for this field is 1.</p> <p>The concept of multiple buckets only applies when you want to create complex or combined price lists that show more than one set of prices. For example, you can run a price list for price list LP and place those LP prices in bucket number 1, and then run a price list for another price list number and place those prices in bucket number 2.</p>
Select Bucket# to Load Price into for Customer selection	<p>When generating the data-extraction file by customer account number (step 8.), you are given up to three buckets to place the prices into.</p> <p>The Default value for this field is 1.</p> <p>The concept of multiple buckets only applies when you want to create complex or combined price lists that show more than one set of prices. For example, you can run a price list for account number 99 and place those prices in bucket number 1, and then run a price list for another account number and place those prices in bucket number 2.</p>
Bucket Description	<p>Enter a brief description of the selected bucket of prices. These buckets contain the first three unit of measure conversions that you have created for the item. This will help later when you manipulate the file using various Dancik-supplied and/or third-party programs.</p>
Enter Warehouse, or leave blank to access Stock vs. Non-Stock at Item Level	<p>If you enter a warehouse, that warehouse is used to extract the Item Stock flag from the SKU file (ITEMSTK). If you leave the warehouse field blank, then the Stock flag is pulled from the ITEM file. (See Item File Inventory field)</p>

Table 10-1: Fields in the Price List Print Options Screen *Continued*

Note: The maximum number of price list data sets is nine per file—six price lists numbers plus three sets of customer-specific pricing.

After all Data-Extract options have been loaded, and your report has run, you should have a file in library DOD@DTAEXT with the name you assigned on the screen shown in Figure 6.

10. You can now move this file from the AS/400 to personal computers, and manipulate the file using spreadsheets, third-party software, and the Dancik-supplied options described later in this document.

Figure 7 is a flow chart showing the process of creating a data-extraction file from the Price List by Price Class

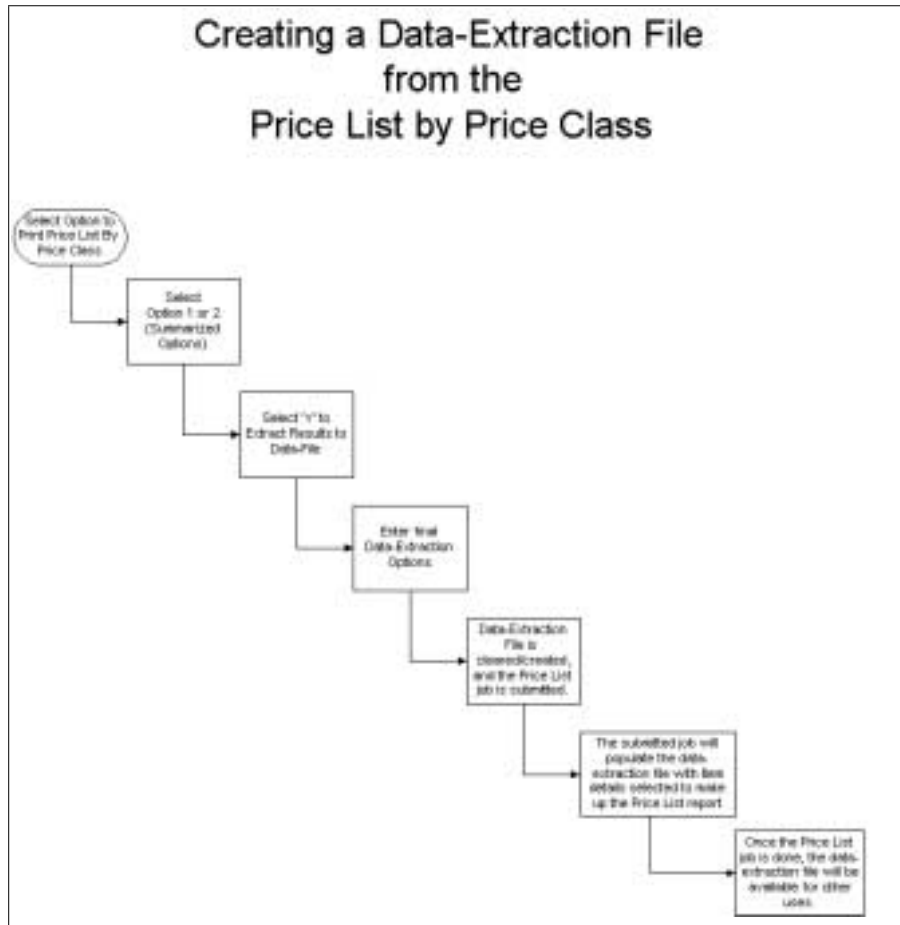


Figure 7: Creating a data-extraction file from the Price List by Price Class

Figure 8 is a flow chart showing the process of working with data-extraction files.

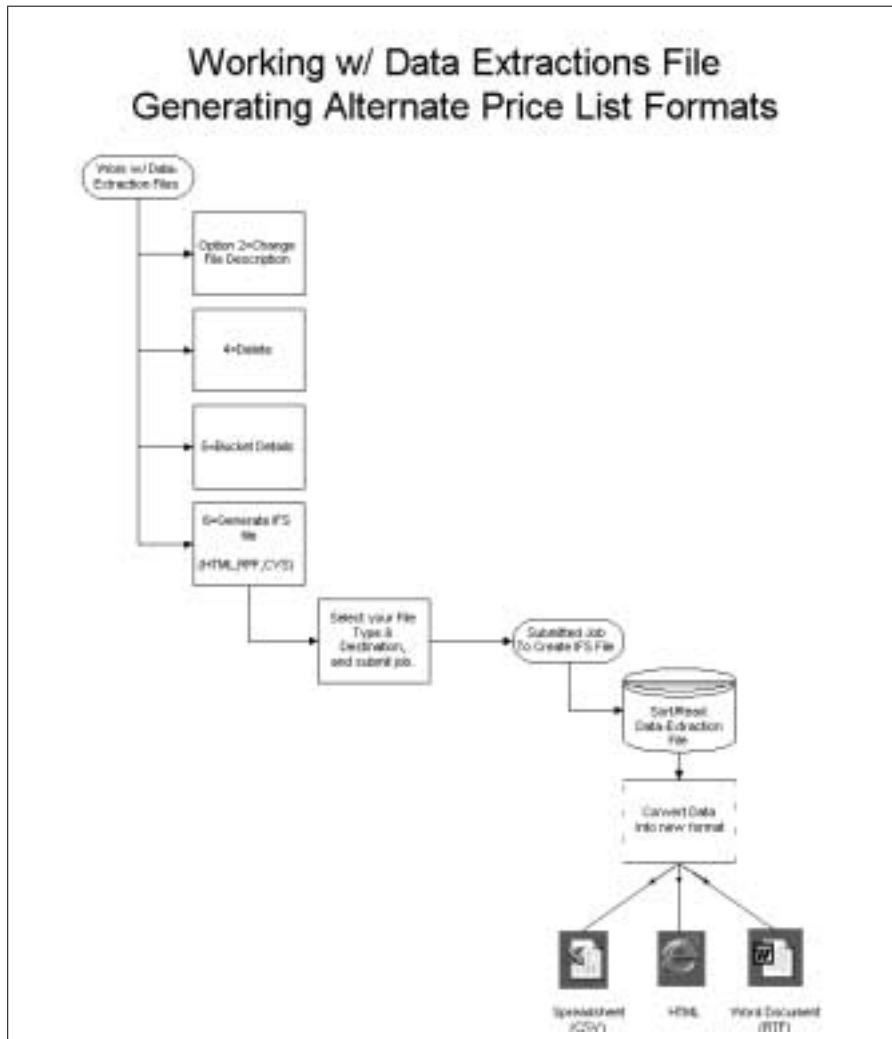


Figure 8: Working with data-extraction files

Working With Data-Extraction Files

After the data-extraction file (DEF) has been created and populated by the Price Lists by Price File, you can work with the DEF using the Work With Data-Extraction Files program. This program is a part of Dancik's Output Distribution System (ODS). Most of the features of this program require that certain hardware infrastructure is in place. Depending on the feature, this infrastructure might include networked connections between personal computers and your AS/400, an operational AS/400 web server and/or an operational AS/400 e-mail server.

The Work With Data-Extraction Files program includes options for manipulating the data supplied in DEFs and generating Word documents, spreadsheets, and even HTML drilldown applications.

To work with price list data extraction files

1. On the Dancik menu system, from menu RPL, enter option **10**, or from ODS enter option **30**. A screen appears showing the category of data-extraction file. At this time, the Price List by Price Class DEF is only option available (Figure 9).

```
2/07/02                               Output Distribution                               OD3020R
10:17:37                               Work w/ Data Extraction Files                               VR
-----
Category .....: Price List By Price Class
-----
Opt  FileName  Description
---  -
  -  DMTEST01  REGULAR REPORT
  -  DMTEST02  B1
  -  DMTEST03  ROLL/CUT - SHA
  -  MDKTST1   ACCT #202557 - MANUF ARB - LP
  -  MDKTST12  ACCT #202557 Bucket #2 - AOT/SAI
  -  MDKTST13  ACCT #202557 BUCKET #3 - WIL/WEN/TAR
  -  MDKTST21  PRICE LIST BUCKET #1 B1/ARM-3RD RUN
  -  MDKTST22  PRICE LIST BUCKET #2 LP/AOT/SAI 2ND RUN
  -  SAILIST   SAILIST FOR CUSTOMERS INCLUDING PROMO

                                                                 Bottom
-----
Options ==> 2=Chg File Desc  4=Delete  5=Bucket Details  6=Generate IFS File
F6=Return  F7=Exit
```

Figure 9: Output Distribution screen showing Price List by Price Class data-extraction files

Figure 9 shows all of the Price List data-extraction files that were created by the data-extraction option of the Price List by Price Class program.

Table 10-2 describes the options available for Price List by Price Class data-extraction files.

Options	Description
2=Chg File Desc	This option allows you to change the 50-character description field that defines the DEF.
4=Delete	This option deletes the DEF from your system.
5=Bucket Details	Use this option to view and modify detailed descriptions of each price list and customer price “bucket.” You establish these bucket descriptions are established when you run the Price List by Price Class program.
6=Generate IFS File	Use this option to generate Word documents, spreadsheets, and HTML files, for selected extraction files.

Table 10-2: File Options for Price List by Price Class Data-Extraction

- Select one of the options at the bottom of the screen shown in Figure 9. The following describes the results of selection each option.

If you select option **5 - Bucket Details**, the screen shown in Figure 10 appears showing price list bucket details.

```

2/07/02                               Output Distribution                               0D3020RA
10:24:12                               Work w/ Data Extraction Files - Details                               VR
-----
Category .....: Price List By Price Class
File Name .....: DMTEST01  REGULAR REPORT
Creation Details .....: DMOSLEY12D  2/06/02 14:32
-----
Price List Buckets                               Last Modifications Made
# Description                                     User           Date           Time
-----
1  FGR : REX; END-USER : CT & PP          DMOSLEY12D    2/06/02 14:32
2 -- Bucket not used..
3 -- Bucket not used..
4 -- Bucket not used..
5 -- Bucket not used..
6 -- Bucket not used..

Customer Buckets
1 -- Bucket not used..
2 -- Bucket not used..
3 -- Bucket not used..

-----
F6=Return  F7=Exit

```

Figure 10: Price List Bucket Detail screen

Figure 10 shows the descriptions of the pricing buckets. Each DEF can contain up to six price list buckets, and up to three customer price buckets. Each bucket represents a price for each item. For simple price lists, you probably have only one bucket filled in. However, you can create files (and then spreadsheets and other output) with multiple prices for each item.

If you select option **6-Generate IFS Files** the screen shown in Figure 11 appears. IFS stands for Integrated File System, which is part of the AS/400 operating system.

```

2/07/02      Output Distribution - Data Extractions      OD1900M
10:30:38      Generate Price List By Price Class IFS File      VR
-----
Category .....: Price List By Price Class
File Name .....: DMTEST01

Detail Report Types ....: _ (?)

Report Title/Heading ...: _____

Bucket Selections .....:
  PriceList Pricing ..: 0 (1,2,3,4,5,6)   Packaging Bucket# ..: 1 (1,2,3)
-OR- Customer Pricing ..: 0 (1,2,3)

New File Name .....: (do not include suffix (.RTF,.CSV,etc..))
_____

Destination Folder : /folder1/folder2/folder3/..
_____

F2=Select Generator  F6=Return  F10=Generate Spreadsheet  F11=Previous Parms
  
```

Figure 11: Generate IFS Files screen

Figure 11 defaults to the screen for generating detail reports. However, you can press **F2** to select from the three available “generator” types. This screen always defaults to the last parameters saved for this screen.

Note: Each generator is simply a different form of output.

The entry fields on this screen are described in Table 10-3.

Field Title	Description
Detail Report Types	This field tells the program which detail report to generate. Enter a ? to see a window showing all available options, as follows: 1. Detail with Packaging, Pattern & Color 2. Detail with Item Description, Pattern & Wear 3. Detail with Item Description 1 & 2, & Pattern 4. Detail with Item Description 1 & 2, & Roll / Cut
Report Title/Heading	This is the Heading/Title loaded to your report in the Header area.
Price List Pricing or Customer Pricing	Select one of the two entry fields to tell the program where to pull the pricing from to load into the report.
Packaging Bucket	Select one of the three packaging buckets to be loaded into the report.

Table 10-3: Entry Fields on Generate IFS Files Screen

Field Title	Description
New File Name	This is the name of your new .RTF file. <i>Note: You do not need to enter a file extension, such as RTF, as the program enters an extension for you.</i>
Destination Folder	This is where your new file will be stored in the IFS.

Table 10-3: Entry Fields on Generate IFS Files Screen *Continued*

Table 10-4 describes the command keys for this screen.

Command Key	Description
F2=Select Generator	Press this key to select the type of file to generate. The choices appear in a window (Figure 12) as follows: <ul style="list-style-type: none"> • Detail Reports in Word (.RTF format) • HTML Drilldowns • Summary Reports in Word (.RTF format)
F6=Return	Return to the previous screen.
F10=Generate Spreadsheet	Press this key and enter the new file name and destination folder that will be used to extract every field of every record into a .CSV spreadsheet. You can select this option at any time. The only field validation is for the file name and folder fields.
F11=Previous Parm	Press this key to display a window showing all previously submitted parameters that were saved. You can select from this list to rerun a previous selection.

Table 10-4: Command Keys for Generate IFS Files Screen

The following window appears when you select the **F2=Select Generator** key.

Select IFS Generator Type

Detail Reports in Word (.RTF format)	█
HTML Drilldowns	
Summary Reports in Word (.RTF format)	

F6=Cancel F7=Exit

Figure 12: F2 options to select generator

Press **F2** to select Generator Type, **Detailed Reports In Word**. The screen shown in Figure 13 appears.

```

2/07/02      Output Distribution - Data Extractions      OD1900M
10:59:53      Generate Price List By Price Class IFS File  VR
-----
Category .....: Price List By Price Class
File Name .....: DMTEST01

Detail Report Types ....: 1 (?) Detail with Packaging, Pattern & Color

Report Title/Heading ...: Mfgr : REX; END-USER : CT & PP
-----
Bucket Selections .....:
  PriceList Pricing ..: 1 (1,2,3,4,5,6)      Packaging Bucket# ..: 1 (1,2,3)
-OR- Customer Pricing ..: 0 (1,2,3)

New File Name .....: (do not include suffix (.RTF,.CSV,etc..))
  MfgrRexEndUserCTandPP
-----
Destination Folder : /folder1/folder2/folder3/..
  /home/www/dave/
-----
F2=Select Generator  F6=Return  F10=Generate Spreadsheet  F11=Previous Parm  H
    
```

Figure 13: Detail Report Type screen

The entry fields on the screen above are described in Table 10-5:

Field Title	Description
Detail Report Types	This field tells the program which detail report is to generate. Enter a ? to select on option from a window as follows: 1. Detail with Packaging, Pattern & Color 2. Detail with Item Description, Pattern & Wear 3. Detail with Item Description 1 & 2, & Pattern 4. Detail with Item Description 1 & 2, & Roll / Cut
Report Title/Heading	The title/heading for your report in the Header area.
Price List Pricing or Customer Pricing	Select one of the two entry fields to tell the program where to pull the pricing from to load into the report.
Packaging Bucket	Select one of the three packaging buckets to be loaded into the report.
New File Name	The name of your new .RTF file. <i>Note: You do not need to enter a file extension, such as RTF, as the program enters an extension for you.</i>
Destination Folder	This is where your new file will be stored in the IFS.

Table 10-5: Entry Fields for Detail Report Type Screen

HTML DrillDowns

This generator will produce one of the following types of HTML drilldown files.

- HTML DrillDown #1 (Mfgr/ProdLin/PrcCls/Item)
- HTML DrillDown #2 (Eusr/Mfgr/ProdLin/PrcCls/Item)
- HTML DrillDown #3 (Mfgr/PrcCls/Item)

The screen shown in Figure 14 appears when you select IFS Generator Type **HTML DrillDowns**.

```

2/07/02      Output Distribution - Data Extractions      OD1900M
11:18:12      Generate Price List By Price Class IFS File      VR
-----
Category .....: Price List By Price Class
File Name .....: DMTEST01

HTML Drill Down Sorts ..: 1 (?) HTML DrillDown #1 (Mfgr/ProdLin/PrcCls/Item)
  Select Price Format ..: 1 (1=Regular, 2=Roll/Cut)

Report Title/Heading ...: MFGR : REX; END-USER : CT & PP
-----
Bucket Selections .....:
  PriceList Pricing ..: 1 (1,2,3,4,5,6)      Packaging Bucket# ..: 1 (0,1,2,3)
-OR- Customer Pricing ..: 0 (1,2,3)                (0= *ALL)

New File Name .....: (do not include suffix (.RTF,.CSV,etc..))
  mfgrRexEndUserCTandPP
-----
Destination Folder : /folder1/folder2/folder3/..
  /home/www/dave/
-----
F2=Select Generator  F6=Return  F10=Generate Spreadsheet  F11=Previous Parms
    
```

Figure 14: HTML DrillDown Sorts screen

Table 10-6 provides descriptions of the entry fields on this screen.

Field Title	Description
HTML DrillDown Sorts	This field tells the program which HTML drilldown to generate. Enter a ? to view all available options. 1. HTML DrillDown #1 (Mfgr/ProdLin/PrcCls/Item) 2. HTML DrillDown #2 (Eusr/Mfgr/ProdLin/PrcCls/Item) 3. HTML DrillDown #3 (Mfgr/PrcCls/Item)
Select Price Format	This field tells the program whether to use the regular pricing format or the Roll/Cut price format.
Report Title/Heading	This will be the Heading/Title loaded to your report in the Header area.

Table 10-6: Entry Fields for HTML DrillDown Sorts Screen

Field Title	Description
Price List Pricing or Customer Pricing	Select one of the two entry fields to tell the program where to pull the pricing from to load into the report.
Packaging Bucket	Select one of the three packaging buckets to be loaded into the report, or select 0 to use all three buckets.
New File Name	This is the name for your new .RTF file. <i>Note: You do not need to enter a file extension, such as RTF, as the program enters an extension for you.</i>
Destination Folder	This is where your new file will be stored in the IFS.

Table 10-6: Entry Fields for HTML DrillDown Sorts Screen *Continued*

Summary Reports in Word (.RTF format)

This generator produces the following types of Summary Price List reports in Word (.RTF format):

- Summary by Manufacturer/Price Class
- Summary by Manufacturer/Price Class with Roll/Cut

```

2/07/02      Output Distribution - Data Extractions      OD1900M
11:41:08      Generate Price List By Price Class IFS File      VR
-----
Category .....: Price List By Price Class
File Name .....: DMTEST01

Summary Report Types ...: 1 (?) Summary by Manufacturer/Price Class
Include Comments .....: Y (Y)

Report Title/Heading ...: MFGR ; REX; END-USER ; CT & PP
-----
Bucket Selections .....:
    PriceList Pricing ..: 1 (1,2,3,4,5,6)    Packaging Bucket# ..: 1 (1,2,3)
-OR- Customer Pricing ..: 0 (1,2,3)

New File Name .....: (do not include suffix (.RTF,.CSV,etc..))
mfgRexEndUserCTandPP
-----
Destination Folder : /folder1/folder2/folder3/..
/home/www/dave/
-----
F2=Select Generator  F6=Return  F10=Generate Spreadsheet  F11=Previous Parm s
    
```

Figure 15: Summary Price List Report screen

Table 10-7 describes the entry fields on the Summary Price List Report screen.

Field Title	Description
Summary Report Types	This field tells the program which summary reports to generate. Enter a ? to view the options, as follows: <ol style="list-style-type: none"> 1. Summary by Manufacturer/Price Class 2. Summary by Manufacturer/Price Class with Roll/Cut
Include Comments	This field tells the program whether or not to include the Price Class comments in the report.
Report Title/Heading	This will be the heading/title loaded to your report in the Header area.
Price List Pricing -OR- Customer Pricing	Select one of the two entry fields to tell the program where to pull the pricing from to load into the report.
Packaging Bucket	Select one of the three packaging buckets to be loaded into the report.
New File Name	This is the name of your new .RTF file. <i>Note: You do not need to enter a file extension, such as RTF, as the program enters an extension for you.</i>
Destination Folder	This is where your new file will be stored in the IFS.

Table 10-7: Entry Fields for Summary Price List Report Screen

ODS Options for Data-Extraction

All of the data-extraction features have been integrated with the Dancik-supplied Output Distribution System (ODS).

The new options for the ODS Setup Menu are:

- **Option 30** – Work w/ Data-Extraction Files
- **Option 31** – E-Mail IFS File

Table 10-16 shows the **Work w/Data Extraction Files** option on the ODS Setup menu.

```
2/07/02                               Menu ODSETUP                               DMOSLEY12D
13:54:49                               SAL
===== OUTPUT DISTRIBUTION SETUP MENU =====
Setup Options                           Other Related Options
 1. Authorization Maintenance            21. Work w/ Spooled Files - O/D
 2. Initial Distribution Options         22. User Request History Log
 3. Program Options/User Authority      23. Purge History Log Files
 4. User/Option Authority
 5. Work w/ Default Type & Values       IFS Related Options
    for Distribution Options           30. Work w/ Data Extraction Files
 6. Work w/ BCC E-Mail Addresses        31. E-Mail IFS File
 7. PC Document Types
 8. Reset Initial Files
 9. Work with Job Distribution
Web Related Options
11. Work w/ Web Site Definitions
12. Work w/ Reports Posted To The Web
13. Purge Reports Posted To The Web
                                           (c) 2002 Dancik International
===== 98. DP Menu ===== 99. Signoff ==
Selection or command
===> _____
```

Figure 16: ODS Setup menu with Work w/Data Extraction Files option circled

Note: Options 30 and 31 are also available from menu ODS in the Dancik Menu System.

Option 30. Work with Data-Extraction Files – Refer to “Working With Data-Extraction Files” on page 11. This is the same option that appears on the Price Lists Menu.

Option 31. E-Mail IFS File – Authorized users can send e-mail with an IFS file attached, to up to 25 addresses. This feature requires that a suitable Internet infrastructure be in place. Figure 17 shows the **E-Mail IFS File** option on the Output Distribution Setup Menu.

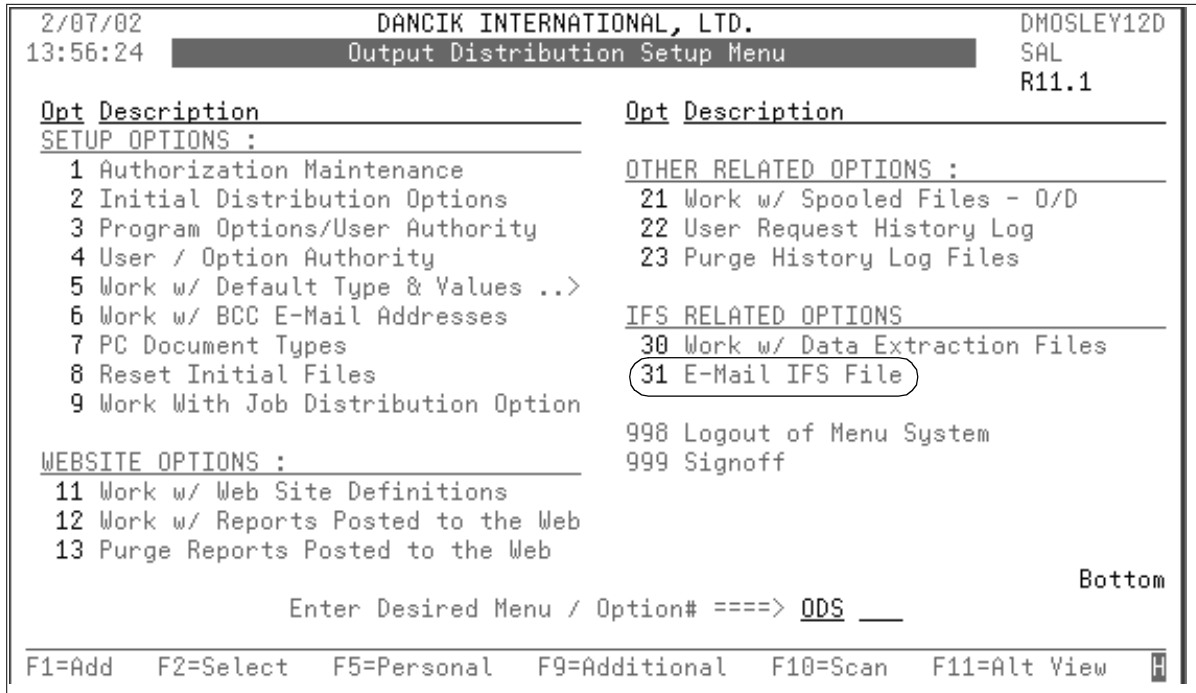


Figure 17: Output Distribution Setup Menu with E-Mail IFS File option circled

Table 10-8 describes the entry fields for E-mail of IFS Files.

Field Heading	Description
To E-Mail Address & Name	Enter up to 25 e-mail addresses and names to receive the submitted e-mail.
From E-Mail Address & Name	The submitter's e-mail address and name. If saved, this information becomes the default and appears when you access this screen again.
Subject	The subject of the e-mail
Message	The message of the e-mail
IFS File	The attached IFS file name. If you are not sure of the exact IFS file name, you can select F4=Prompt IFS for an IFS Lookup window, where you can scroll to locate and select the IFS file you want.

Table 10-8: Entry Fields for E-mail of IFS Files

Table 10-9 shows descriptions of the E-mail of IFS Files command keys.

Command Key	Description
F4=Prompt IFS	To open an IFS Lookup window, where you can scroll to locate and select an IFS file.
F6=Return	Return to the previous screen.
F7=Exit	Exit from current program.
F11=Previous Parameters	To open a Previous Parameters window, where you can select from previously saved submitted parameters.

Table 10-9: Command Keys for E-mail of IFS Files

Figure 18 is an example of how an F4= Prompt IFS screen would look if you were in the IFS directory system. **F4** lets you to select a file/directory to work with.

```

2/07/02          Output Distribution          OD9011R
14:01:13        E-Mail IFS File              VR
-----
Enter Up To 25 To-Email Addresses
To E-Mail Address .....: fflinstone@bedrock.com
Name .....: Fred Flinstone
To E-Mail Address .....: brubble@bedrock.com
Name .....: Barney Rubble
More...
From E-Mail Address ....: ckent@dailuplanet.com
Name .....: Clark Kent
Subject .....: Price List (MFGR : REX)
Message .....: Here is the Drilldown of Manufacturer REX, (Sorted by
Manufacturer/Price Class/Item#...
IFS File .....: /home/www/dave/testSummary1a.HTML
-----
F4=Prompt IFS  F6=Return  F7=Exit  F11=Previous Parameters

```

Figure 18: Example of F4=Prompt IFS screen

If you enter the directory you want to work with and press **Enter**, all of the sub-entries and sub-directories inside that directory appear (Figure 19).

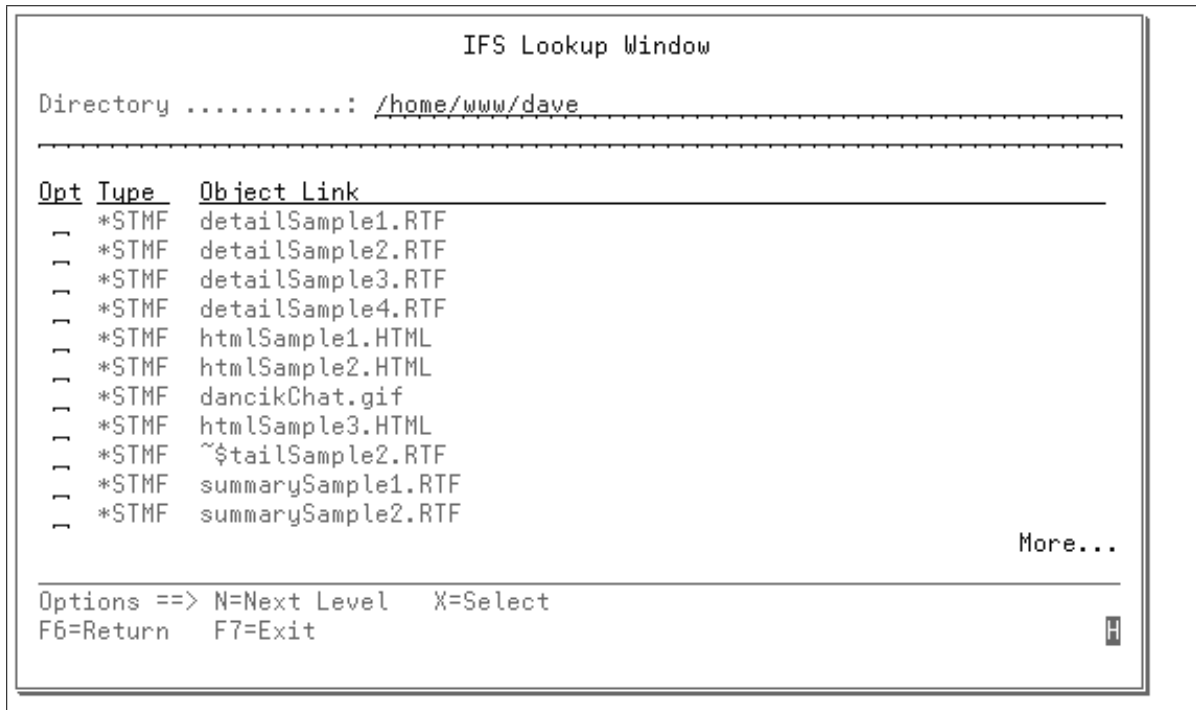


Figure 19: IFS Lookup Window

Table 10-10 describes the options on the IFS Lookup Window.

Options	Description
N=Next Level	You can only use this option on Type *DIR entries. It lets you advance to view all sub-entries of the selected directory.
X=Select	This option lets you to select a *STMF(Stream File) and bring it back to the original calling program.

Table 10-10: Options on the IFS Lookup Window

What is the IFS?

The IFS (integrated file system) is a part of OS/400 that supports stream input/output and storage management, similar to personal computer and UNIX operating systems, while providing an integrating structure over all information stored in the AS/400.

The key features of the integrated file system are:

- Support for storing information in stream files that can contain long continuous strings of data. These strings of data might be, for example, the text of a document or the picture elements in a picture. The stream file support is designed for efficient use in client/server applications.
- A hierarchical directory structure that lets you organize objects like fruit on the branches of a tree. Specifying the path through the directories to an object accesses the object.

- A common interface that lets users and applications access, not only the stream files, but also database files, documents, and other objects that are stored in the AS/400.
- A common view of stream files that are stored locally on the AS/400. Stream files can also be stored remotely on a Local Area Network (LAN) server, a Novell NetWare server, another remote AS/400, or a Network File System server.

File Layout of the Price List Data-Extraction File

The fields shown in Table 10-11 include most of the values that can print on the regular Price Lists by Price Class. However, this file contains all of the items included within each of the price classes, along with many other fields that do not print on the standard Price Lists by Price Class. Therefore, you have far more flexibility using this file, than you do with the standard printing options. Additionally, the file lets you store up to six sets of prices by price list, and up to three sets of prices for specific account numbers.

Field Name	Description
00ITEM	Item#
00DESC1	Item Description 1
00DESC2	Item Description 2
00EUSR	End User Category Code
00EUSR@DSC	End User Category Name
00MFGR	Manufacturer Code
00MFGR@DSC	Manufacturer Name
00PLIN	Product Line Code
00PLIN@DSC	Product Line Name
00PCLS	Price Class Code
00PCLS@DSC	Price Class Description
00PKGLINE1	Packaging Line #1
00PKGLINE2	Packaging Line #2
00PKGLINE3	Packaging Line #3
00WEAR	Wear Code
00COLOR	Color Name
00PATTERN	Pattern Name
00IATT@1	Item Attr - 1

Table 10-11: Price List by Price Class Fields

Field Name	Description
O0IATT@2	Item Attr - 2
O0IATT@3	Item Attr - 3
O0IATT@4	Item Attr - 4
O0IATT@5	Item Attr - 5
O0TRIM	Trim Class Code
O0SITM#	Suppliers Item#
O0STK@FLG	Stock Item Flag (Y=Stock, N-Non-Stk)
O0DSC@FLG	Discontinue Flag
O0UOM	Unit of Measure
O0PLST1	Price List #1
O0PLST1PR1	Price List #1 - Price 1
O0PLST1PR2	Price List #1 - Price 2
O0PLST1EDT	Price List #1 - Exp Date
O0PLST1RP1	Price List #1 - Reg Price 1
O0PLST1RP2	Price List #1 - Reg Price 2
O0PLST2	Price List #2
O0PLST2PR1	Price List #2 - Price 1
O0PLST2PR2	Price List #2 - Price 2
O0PLST2EDT	Price List #2 - Exp Date
O0PLST2RP1	Price List #2 - Reg Price 1
O0PLST2RP2	Price List #2 - Reg Price 2
O0PLST3	Price List #3
O0PLST3PR1	Price List #3 - Price 1
O0PLST3PR2	Price List #3 - Price 2
O0PLST3EDT	Price List #3 - Exp Date
O0PLST3RP1	Price List #3 - Reg Price 1
O0PLST3RP2	Price List #3 - Reg Price 2

Table 10-11: Price List by Price Class Fields *Continued*

Field Name	Description
O0PLST4	Price List #4
O0PLST4PR1	Price List #4 - Price 1
O0PLST4PR2	Price List #4 - Price 2
O0PLST4EDT	Price List #4 - Exp Date
O0PLST4RP1	Price List #4 - Reg Price 1
O0PLST4RP2	Price List #4 - Reg Price 2
O0PLST5	Price List #5
O0PLST5PR1	Price List #5 - Price 1
O0PLST5PR2	Price List #5 - Price 2
O0PLST5EDT	Price List #5 - Exp Date
O0PLST5RP1	Price List #5 - Reg Price 1
O0PLST5RP2	Price List #5 - Reg Price 2
O0PLST6	Price List #6
O0PLST6PR1	Price List #6 - Price 1
O0PLST6PR2	Price List #6 - Price 2
O0PLST6EDT	Price List #6 - Exp Date
O0PLST6RP1	Price List #6 - Reg Price 1
O0PLST6RP2	Price List #6 - Reg Price 2
O0ACCT1	Account #1
O0ACCT1@DS	Account #1 - Description
O0ACCT1PR1	Account #1 - Price 1
O0ACCT1PR2	Account #1 - Price 2
O0ACCT1EDT	Account #1 - Exp Date ISO
O0ACCT1RP1	Account #1 - Reg Price 1
O0ACCT1RP2	Account #1 - Reg Price 2
O0ACCT2	Account #2
O0ACCT2@DS	Account #2 - Description

Table 10-11: Price List by Price Class Fields *Continued*

Field Name	Description
O0ACCT2PR1	Account #2 - Price 1
O0ACCT2PR2	Account #2 - Price 2
O0ACCT2EDT	Account #2 - Exp Date ISO
O0ACCT2RP1	Account #2 - Reg Price 1
O0ACCT2RP2	Account #2 - Reg Price 2
O0ACCT3	Account #3
O0ACCT3@DS	Account #3 - Description
O0ACCT3PR1	Account #3 - Price 1
O0ACCT3PR2	Account #3 - Price 2
O0ACCT3EDT	Account #3 - Exp Date ISO
O0ACCT3RP1	Account #3 - Reg Price 1
O0ACCT3RP2	Account #3 - Reg Price 2

Table 10-11: Price List by Price Class Fields *Continued*



DANCIK INTERNATIONAL

ABC DISTRIBUTORS - PRICE LIST SUMMARY #1

<u>PRICE CLASS</u>	<u>UNIT PRICE</u>	<u>U/M</u>	<u>EXPIRES ON</u>	<u>REGULAR PRICE</u>
REX CERAMICHE ARTISTICHE				
CHATEAUX DE LA LOIRE 12X12	\$5.750	SF		
Available in 35 stone looks, from limestone to black granite.				
CHATEAUX DE LA LOIRE 12X18	\$8.000	SF		
Available in Deep Purple, Shocking Orange, and Sahara Beige.				
CHATEAUX DE LA LOIRE 6X12	\$6.550	SF		
Available in 2 types of stone looks: Limestone and Norwegian Sunset				
CHATEAUX 12X12 BORDER CORNER	\$11.250	PC		
The 12x12 border corners are available in same colors as 12x12 field.				
CHATEAUX 12X18 DECO BORDER	\$14.050	PC		
All decorative borders are special order only. The decos can be made to match any colors in the 12x12 and 12x18 series.				
CHATEAUX 6X12 DECO BORDER	\$5.250	PC	03/01/02	\$7.950
The 6x12 decos are limited edition only. Call before ordering.				
CHATEAUX 6X6 DECO BORDER	\$3.450	PC		
The 6x6 decos are limited edition only. Call before ordering.				
CHATEAUX DE LA LOIRE 6X6	\$8.990	SF		
Available in solids only: White, Brown, & Slate Green.				
DOTS ONLY 3X3	\$.600	PC		
ECHI DEL PASSATO 12X12	\$4.690	SF		
Available in 12 stone look color combinations.				
ECHI DEL PASSATO 3X12 BULLNOSE	\$2.950	PC		
Available in all colors of 6x6 and 6x12 tiles.				
ECHI DEL PASSATO 6X12	\$5.890	SF		
Available in 2 stone looks: Limestone and White Marble				
ECHI DEL PASSATO 6X6	\$6.190	SF		
Available in Rancho Red, Graino Green, and Peachy Peach. Note: last year's chipped edge look is replaced by a more natural edge, still with a rustic charm.				
ECHI DEL TOWER DISPLAY& BOARDS	\$299.760	EA		
ECHI DEL 25X25 PICTURE BOARDS	\$15.650	EA		
INDIA 18X18 KOTAH	\$7.550	SF		

All prices are subject to change without notice.

Run Date : 02/08/02



DANCIK INTERNATIONAL

ABC DISTRIBUTORS - PRICE LIST SUMMARY #2

<u>PRICE CLASS</u>	<u>ROLL</u>	<u>CUT</u>	<u>U/M</u>	<u>EXPIRES ON</u>	<u>REGULAR ROLL</u>	<u>REGULAR CUT</u>
ABC MANUFACTURING						
ABC DESIGNER 12'	\$10.790	\$11.990	LF			
SHAW INDUSTRIES						
ABODE	\$6.110	\$6.290	SY			
ADVISOR 26	\$7.070	\$7.190	SY			
AGGRESSOR	\$6.990	\$6.990	SY			
ALLIANCE PLUS	\$6.960	\$8.990	SY			
ALLIANCE SOLID	\$6.960	\$8.990	SY			
ANYTHING GOES AFFLUENT	\$9.930	\$10.990	SY			
ANYTHING GOES DAZZLING	\$17.420	\$19.990	SY			
ANYTHING GOES ESTEEM	\$11.240	\$14.990	SY			
ANYTHING GOES ULTIMATE	\$19.420	\$21.990	SY			
BETTER N EVER II	\$4.050	\$4.500	SY			
BETTER N EVER III	\$5.150	\$5.800	SY			
BOUNTIFUL	\$8.550	\$9.750	SY			
CASUAL COMFORT	\$10.480	\$12.880	SY			
CLASSIC TOUCH	\$10.250	\$12.490	SY			
COMMANDER	\$2.840	\$3.320	SY			

All prices are subject to change without notice.

Run Date : 02/08/02



DANCIKINTERNATIONAL

ABC DISTRIBUTORS - PRICE LIST DETAIL #1

REX CERAMICHE ARTISTICHE

CHATEAUX DE LA LOIRE 12X12				Wear Rating: 5	
12X12	BEIGE3	REX4087	10.975 SF per CT	\$5.750	SF
	BLUE1	REX4088			
	GREY2	REX4090			
	TERRA1	REX4089			
	WHITE	REX4086			

CHATEAUX DE LA LOIRE 12X18				Wear Rating: B	
SOLID	BLUE	REX28632011	10.437 SF per CT	\$8.000	SF
	BLUE	REX040863			
	BEIGE3	REX4093			
	BLUE1	REX4094			
	GREY2	REX4096			
	TERRA1	REX4095			
	WHITE3	REX4092			

CHATEAUX DE LA LOIRE 6X12				Wear Rating: 5	
6X12	BEIGE3	REX4080	10.006 SF per CT	\$6.550	SF
	BLUE1	REX4081			
	GREY2	REX4083			
	TERRA1	REX4082			
	WHITE3	REX4079			

CHATEAUX 12X12 BORDER CORNER				Wear Rating: 5	
12X12	BEIGE3	REX4124	11 PC per CT	\$11.250	PC
	BLUE1	REX4125			
	GREY2	REX4099			
	TERRA1	REX4126			
	WHITE3	REX4123			

CHATEAUX 12X18 DECO BORDER				Wear Rating: 5	
12X18	BEIGE3	REX4119	7 PC per CT	\$14.050	PC
	BLUE1	REX4120			
	GREY2	REX4097			
	TERRA1	REX4121			
	WHITE3	REX4118			

CHATEAUX 6X12 DECO BORDER				Wear Rating: 5	
6X12	BEIGE3	REX4115	20 PC per CT	\$5.250	PC
	BLUE1	REX4117			
	GREY2	REX4111			
	TERRA1	REX4137			
	WHITE3	REX4106			

CHATEAUX 6X6 DECO BORDER				Wear Rating: 5	
6X6	BEIGE3	REX4116	40 PC per CT	\$3.450	PC

All prices are subject to change without notice.

Run Date : 02/08/02



DANCIK INTERNATIONAL

ABC DISTRIBUTORS - PRICE LIST DETAIL #2

REX CERAMICHE ARTISTICHE

<u>CODE#</u>	<u>W/R</u>	<u>SIZE</u>	<u>DESCRIPTION</u>	<u>PRICE</u>
CHATEAUX DE LA LOIRE 12X12				
REX4087	5	12X12	CHATEAUX CHAUMONT 12X12	\$5.750 SF
REX4088	5	12X12	CHATEAUX VILLAND 12X12	\$5.750 SF
REX4090	5	12X12	CHATEAUX SAUMUR 12X12	\$5.750 SF
REX4089	5	12X12	CHATEAUX BLOISE 12X12	\$5.750 SF
REX4086	5	12X12	CHATEAUX AMBOISE 12X12	\$5.750 SF
<u>PACKAGING 10.975 SF per CT</u>				
CHATEAUX DE LA LOIRE 12X18				
REX28632011	B	SOLID	TESTING DUPLICATE CUSTOMER	\$8.000 SF
REX040863	B	SOLID	DUPE RED ITEM	\$8.000 SF
REX4093	5	12X18	CHATEAUX CHAUMONT 12X18	\$8.000 SF
REX4094	5	12X18	CHATEAUX VILLAND 12X18	\$8.000 SF
REX4096	5	12X18	CHATEAUX SAUMUR 12X18	\$8.000 SF
REX4095	5	12X18	CHATEAUX BLOISE 12X18	\$8.000 SF
REX4092	5	12X18	CHATEAUX AMBOISE 12X18	\$8.000 SF
<u>PACKAGING 10.437 SF per CT</u>				
CHATEAUX DE LA LOIRE 6X12				
REX4080	5	6X12	CHATEAUX CHAUMONT 6X12	\$6.550 SF
REX4081	5	6X12	CHATEAUX VILLAND 6X12	\$6.550 SF
REX4083	5	6X12	CHATEAUX SAUMUR 6X12	\$6.550 SF
REX4082	5	6X12	CHATEAUX BLOISE 6X12	\$6.550 SF
REX4079	5	6X12	CHATEAUX AMBOISE 6X12	\$6.550 SF
<u>PACKAGING 10.006 SF per CT</u>				
CHATEAUX 12X12 BORDER CORNER				
REX4124	5	12X12	MFGR NOT PRODUCING THIS COLOR	\$11.250 PC
REX4125	5	12X12	MFGR NOT PRODUCING THIS COLOR	\$11.250 PC
REX4099	5	12X12	MFGR NOT PRODUCING THIS COLOR	\$11.250 PC
REX4126	5	12X12	CHATEAUX BLOISE 12X12 BRD CRN	\$11.250 PC
REX4123	5	12X12	CHATEAUX AMBOISE 12X12 BRD CRN	\$11.250 PC
<u>PACKAGING 11 PC per CT</u>				
CHATEAUX 12X18 DECO BORDER				
REX4119	5	12X18	MFGR NOT PRODUCING THIS COLOR	\$14.050 PC
REX4120	5	12X18	MFGR NOT PRODUCING THIS COLOR	\$14.050 PC
REX4097	5	12X18	MFGR NOT PRODUCING THIS COLOR	\$14.050 PC
REX4121	5	12X18	CHATEAUX BLOISE 12X18 BORDER	\$14.050 PC
REX4118	5	12X18	CHATEAUX AMBOISE 12X18 BORDER	\$14.050 PC
<u>PACKAGING 7 PC per CT</u>				
CHATEAUX 6X12 DECO BORDER				
REX4115	5	6X12	MFGR NOT PRODUCING THIS COLOR	\$5.250 PC

All prices are subject to change without notice.

Run Date : 02/08/02



DANCIK INTERNATIONAL

ABC DISTRIBUTORS - PRICE LIST DETAIL #3

<u>ITEM#</u>	<u>DESCRIPTION</u>	<u>WEAR</u>	<u>PATTERN</u>	<u>PRICE</u>
CHATEAUX DE LA LOIRE 12X12				
REX4086	CHATEAUX AMBOISE 12X12 OFF WHITE	5	12X12	\$5.750 SF
REX4087	CHATEAUX CHAUMONT 12X12 BEIGE	5	12X12	\$5.750 SF
REX4088	CHATEAUX VILLAND 12X12 LIGHT BLUE	5	12X12	\$5.750 SF
REX4089	CHATEAUX BLOISE 12X12 TERRA COTTA	5	12X12	\$5.750 SF
REX4090	CHATEAUX SAUMUR 12X12 BLACK BLUE	5	12X12	\$5.750 SF
<u>PACKAGING 10.975 SF per CT</u>				
CHATEAUX DE LA LOIRE 12X18				
REX040863	DUPE RED ITEM	B	SOLID	\$8.000 SF
REX28632011	TESTING DUPLICATE CUSTOMER ITEM	B	SOLID	\$8.000 SF
REX4092	CHATEAUX AMBOISE 12X18 OFF WHITE	5	12X18	\$8.000 SF
REX4093	CHATEAUX CHAUMONT 12X18 BEIGE	5	12X18	\$8.000 SF
REX4094	CHATEAUX VILLAND 12X18 LIGHT BLUE	5	12X18	\$8.000 SF
REX4095	CHATEAUX BLOISE 12X18 TERRA COTTA	5	12X18	\$8.000 SF
REX4096	CHATEAUX SAUMUR 12X18 BLACK BLUE	5	12X18	\$8.000 SF
<u>PACKAGING 10.437 SF per CT</u>				
CHATEAUX DE LA LOIRE 6X12				
REX4079	CHATEAUX AMBOISE 6X12 OFF WHITE	5	6X12	\$6.550 SF
REX4080	CHATEAUX CHAUMONT 6X12 BEIGE	5	6X12	\$6.550 SF
REX4081	CHATEAUX VILLAND 6X12 LIGHT BLUE	5	6X12	\$6.550 SF
REX4082	CHATEAUX BLOISE 6X12 TERRA COTTA	5	6X12	\$6.550 SF
REX4083	CHATEAUX SAUMUR 6X12 BLACK BLUE	5	6X12	\$6.550 SF
<u>PACKAGING 10.006 SF per CT</u>				
CHATEAUX 12X12 BORDER CORNER				
REX4099	MFGR NOT PRODUCING THIS COLOR AT THIS TIME.	5	12X12	\$11.250 PC
REX4123	CHATEAUX AMBOISE 12X12 BRD CRN OFF WHITE RELIEF DECO	5	12X12	\$11.250 PC
REX4124	MFGR NOT PRODUCING THIS COLOR AT THIS TIME.	5	12X12	\$11.250 PC
REX4125	MFGR NOT PRODUCING THIS COLOR AT THIS TIME.	5	12X12	\$11.250 PC
REX4126	CHATEAUX BLOISE 12X12 BRD CRN TERRA COTTA RELIEF DECO	5	12X12	\$11.250 PC
<u>PACKAGING 11 PC per CT</u>				
CHATEAUX 12X18 DECO BORDER				
REX4097	MFGR NOT PRODUCING THIS COLOR AT THIS TIME.	5	12X18	\$14.050 PC
REX4118	CHATEAUX AMBOISE 12X18 BORDER OFF WHITE RELIEF DECO	5	12X18	\$14.050 PC
REX4119	MFGR NOT PRODUCING THIS COLOR AT THIS TIME.	5	12X18	\$14.050 PC
REX4120	MFGR NOT PRODUCING THIS COLOR AT THIS TIME.	5	12X18	\$14.050 PC
REX4121	CHATEAUX BLOISE 12X18 BORDER TERRA COTTA RELIEF DECO	5	12X18	\$14.050 PC
<u>PACKAGING 7 PC per CT</u>				
CHATEAUX 6X12 DECO BORDER				
REX4106	CHATEAUX AMBOISE 6X12 BORDER OFF WHITE RELIEF DECO	5	6X12	\$5.250 PC
REX4111	MFGR NOT PRODUCING THIS COLOR AT THIS TIME.	5	6X12	\$5.250 PC
REX4115	MFGR NOT PRODUCING THIS COLOR AT THIS TIME.	5	6X12	\$5.250 PC
REX4117	MFGR NOT PRODUCING THIS COLOR AT THIS TIME.	5	6X12	\$5.250 PC
REX4137	CHATEAUX BLOISE 6X12 BORDER TERRA COTTA RELIEF DECO	5	6X12	\$5.250 PC
<u>PACKAGING 20 PC per CT</u>				

All prices are subject to change without notice.

Run Date : 02/08/02



DANCIK INTERNATIONAL

ABC DISTRIBUTORS - PRICE LIST DETAIL #4

<u>ITEM#</u>	<u>DESCRIPTION</u>	<u>PATTERN</u>	<u>ROLL</u>	<u>CUT</u>
ABODE				
SHA29292165	ABODE PARASOL 12	PLUSH	\$6.110 SY	\$6.290 SY
SHA29292166	ABODE CHINA BEACH 12	PLUSH	\$6.110 SY	\$6.290 SY
SHA29292167	ABODE MILKGLASS 12	PLUSH	\$6.110 SY	\$6.290 SY
SHA29292168	ABODE DEERSKIN 12	PLUSH	\$6.110 SY	\$6.290 SY
SHA29292169	ABODE JAMOCHA 12	PLUSH	\$6.110 SY	\$6.290 SY
SHA29292170	ABODE CLAMSHELL 12	PLUSH	\$6.110 SY	\$6.290 SY
SHA29292365	ABODE SHANGRILA 12	PLUSH	\$6.110 SY	\$6.290 SY
SHA29292465	ABODE CHALET 12	PLUSH	\$6.110 SY	\$6.290 SY
SHA29292466	ABODE CORSAIR 12	PLUSH	\$6.110 SY	\$6.290 SY
SHA29292565	ABODE GULL GREY 12	PLUSH	\$6.110 SY	\$6.290 SY
SHA29292566	ABODE SHIPYARD 12	PLUSH	\$6.110 SY	\$6.290 SY
SHA29292765	ABODE PICKLED PINE 12	PLUSH	\$6.110 SY	\$6.290 SY
SHA29292766	ABODE ULTRASUEDE 12	PLUSH	\$6.110 SY	\$6.290 SY
SHA29292865	ABODE ROSEBUD 12	PLUSH	\$6.110 SY	\$6.290 SY

PACKAGING 3.2 LB per SY

ADVISOR 26

SHA3055180	ADVISOR 26 QUAIL 12	TEXT LOOP	\$7.070 SY	\$7.190 SY
SHA3055280	ADVISOR 26 WHEATFIELD 12	TEXT LOOP	\$7.070 SY	\$7.190 SY
SHA3055380	ADVISOR 26 TROPIC GREEN 12	TEXT LOOP	\$7.070 SY	\$7.190 SY
SHA3055481	ADVISOR 26 SKYWAY 12	TEXT LOOP	\$7.070 SY	\$7.190 SY
SHA3055482	ADVISOR 26 DAYBREAK 12	TEXT LOOP	\$7.070 SY	\$7.190 SY
SHA3055483	ADVISOR 26 NIGHT SEA 12	TEXT LOOP	\$7.070 SY	\$7.190 SY
SHA3055484	ADVISOR 26 BALTIC BLUE 12	TEXT LOOP	\$7.070 SY	\$7.190 SY
SHA3055580	ADVISOR 26 DECO GREY 12	TEXT LOOP	\$7.070 SY	\$7.190 SY
SHA3055581	ADVISOR 26 SPRING FROST 12	TEXT LOOP	\$7.070 SY	\$7.190 SY
SHA3055582	ADVISOR 26 WALNUT 12	TEXT LOOP	\$7.070 SY	\$7.190 SY
SHA3055680	ADVISOR 26 APRICOT HAZE 12	TEXT LOOP	\$7.070 SY	\$7.190 SY
SHA3055681	ADVISOR 26 ARIZONA CLAY 12	TEXT LOOP	\$7.070 SY	\$7.190 SY
SHA3055780	ADVISOR 26 KOALA 12	TEXT LOOP	\$7.070 SY	\$7.190 SY
SHA3055781	ADVISOR 26 CINNAMON SPICE 12	TEXT LOOP	\$7.070 SY	\$7.190 SY
SHA3055880	ADVISOR 26 CARDINAL 12	TEXT LOOP	\$7.070 SY	\$7.190 SY
SHA3055881	ADVISOR 26 ROSE BLUSH 12	TEXT LOOP	\$7.070 SY	\$7.190 SY

PACKAGING 150 SY per RL

AGGRESSOR

SHA3111101	AGGRESSOR MOON GLOW 12	SOLID	\$6.990 SY	\$6.990 SY
SHA3111102	AGGRESSOR MISTY WHEAT 12	SOLID	\$6.990 SY	\$6.990 SY
SHA3111103	AGGRESSOR SAHARA BEIGE 12	SOLID	\$6.990 SY	\$6.990 SY
SHA3111104	AGGRESSOR WESTERN TAN 12	SOLID	\$6.990 SY	\$6.990 SY
SHA3111105	AGGRESSOR SPRING RYE 12	SOLID	\$6.990 SY	\$6.990 SY
SHA3111106	AGGRESSOR BUFF 12	SOLID	\$6.990 SY	\$6.990 SY
SHA3111301	AGGRESSOR MYSTIC SEAFOAM 12	SOLID	\$6.990 SY	\$6.990 SY
SHA3111302	AGGRESSOR MANHATTAN TEAL 12	SOLID	\$6.990 SY	\$6.990 SY
SHA3111303	AGGRESSOR EUCALYPTUS 12	SOLID	\$6.990 SY	\$6.990 SY
SHA3111401	AGGRESSOR BLUE MOON 12	SOLID	\$6.990 SY	\$6.990 SY
SHA3111402	AGGRESSOR COLONIAL BLUE 12	SOLID	\$6.990 SY	\$6.990 SY
SHA3111501	AGGRESSOR PEWTER 12	SOLID	\$6.990 SY	\$6.990 SY
SHA3111502	AGGRESSOR SHADOW GREY 12	SOLID	\$6.990 SY	\$6.990 SY
SHA3111503	AGGRESSOR STEAMBOAT 12	??	\$6.990 SY	\$6.990 SY

All prices are subject to change without notice.

Run Date : 02/08/02